
Installation Windows server 2025

Première étape : Créer la machine virtual avec l'iso suivants ! :

Crée une machine virtuelle

Virtual machine Name and Operating System

Please choose a descriptive name and destination folder for the new virtual machine. The name you choose will be used throughout VirtualBox to identify this machine. Additionally, you can select an ISO image which may be used to install the guest operating system.

Nom : ✓

Folder:

ISO Image: ✓

Edition:

Type : x64 2022

Subtype:

Version :

Skip Unattended Installation

i Detected OS type: Windows 2022 (64-bit). This OS type can be installed unattendedly. The install will start after this wizard is closed.

Aide

Deuxième étape : Configuration du nom d'utilisateur et du mots de passes et le serveur !

Crée une machine virtuelle

Unattended Guest OS Install Setup

You can configure the unattended guest OS install by modifying username, password, and hostname. Additionally you can enable guest additions install. For Microsoft Windows guests it is possible to provide a product key.

Username and Password

Username: ✓

Password:

Repeat Password:

Guest Additions

Guest Additions ISO:

Additional Options

Product Key:

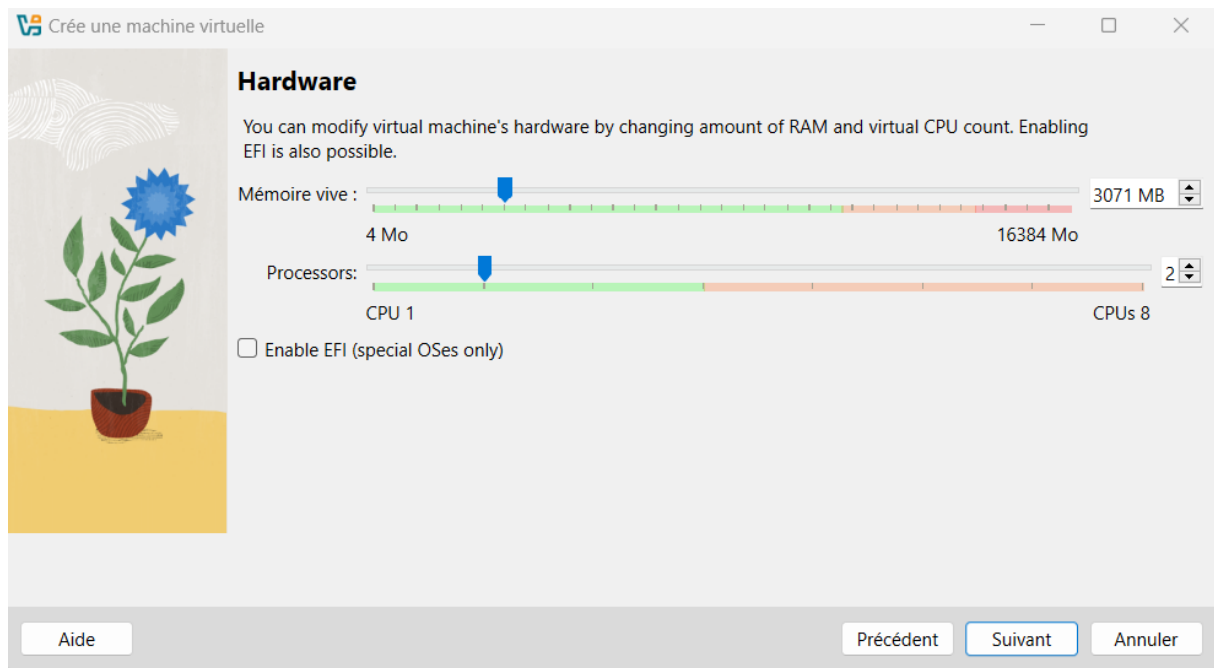
Hostname: ✓

Domain Name: ✓

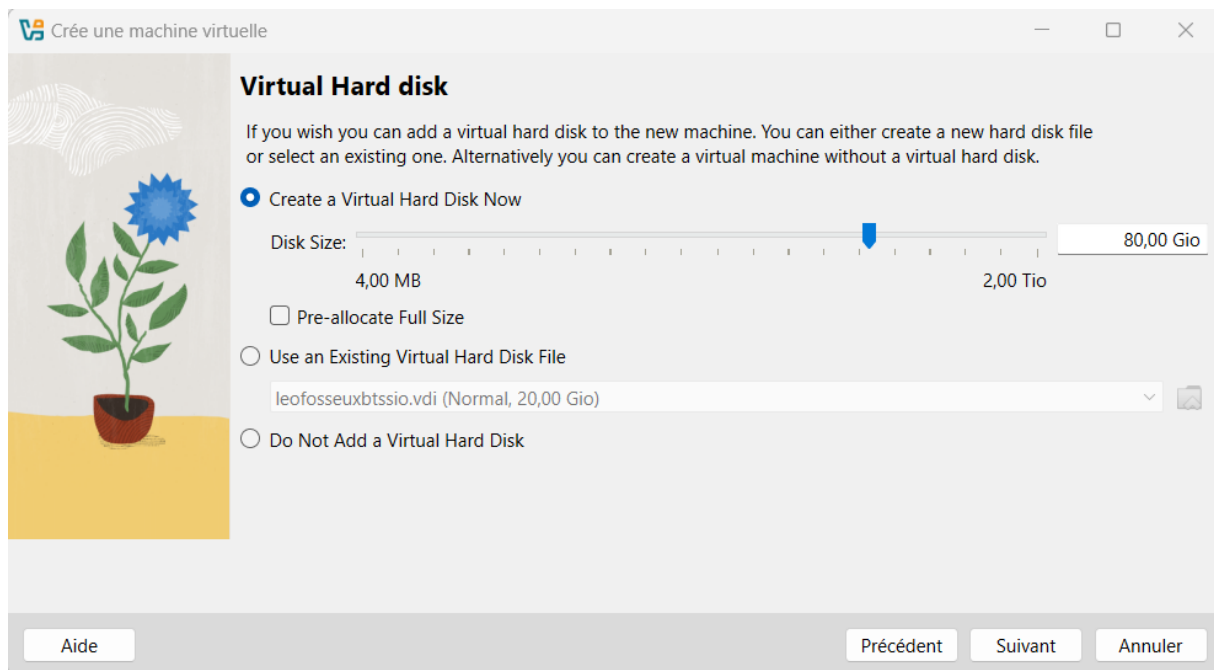
Install in Background

Aide










Configuration de la mémoire vive ainsi que du processeur de la machine virtuelle



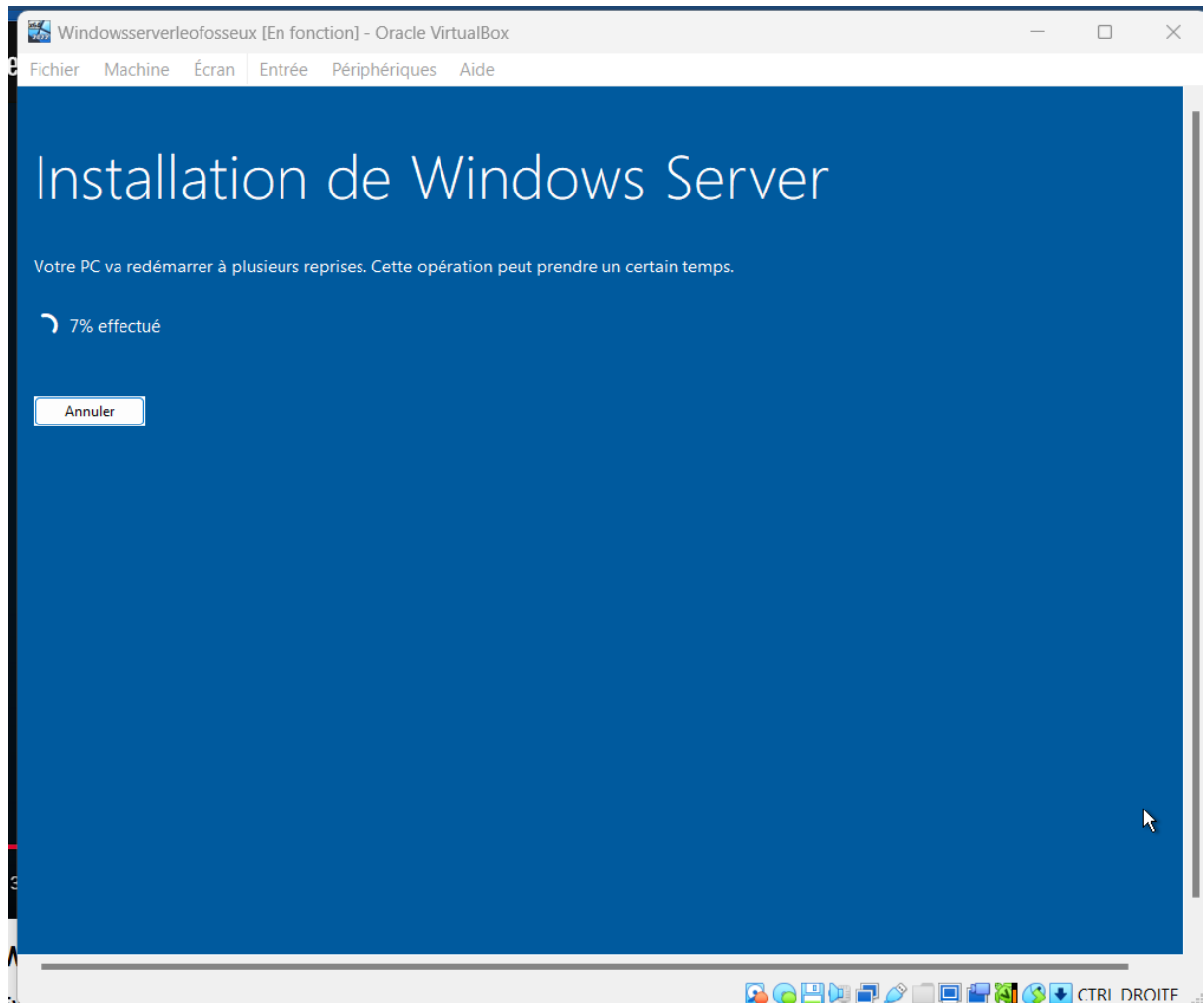
Allouer l'espace de stockage de la machine virtuel avec Virtual box



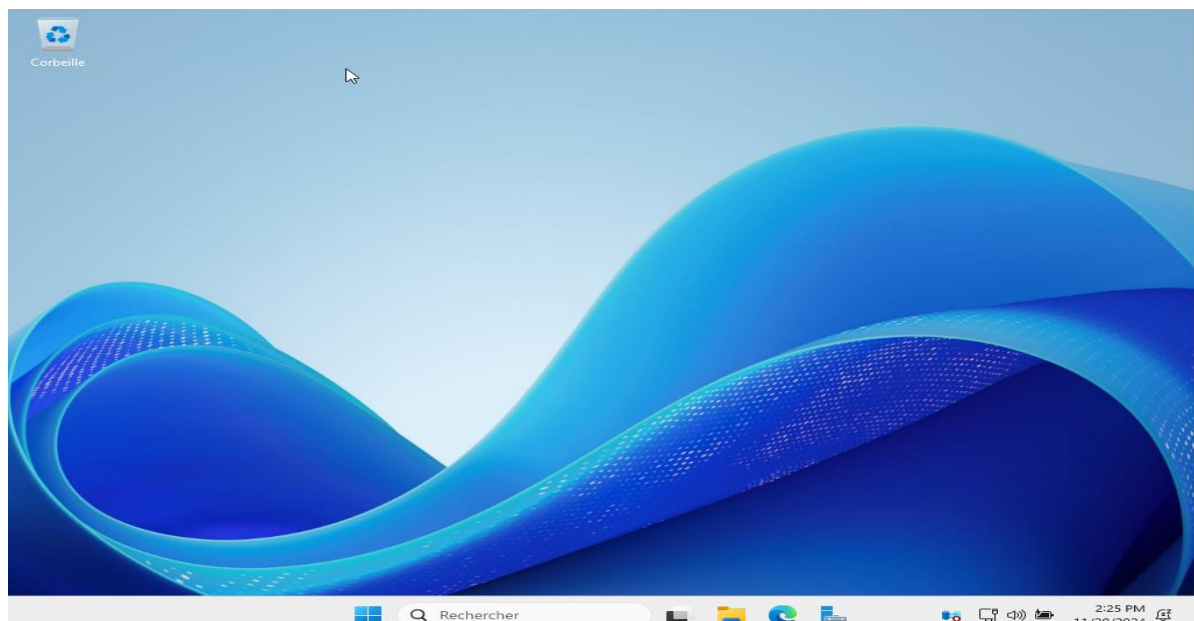
Fin de la configuration avec virtual box

 Général
Nom : Windowsserverleofosseux Système d'exploitation : Windows 2022 (64-bit)
 System
Mémoire vive : 3071 Mo Processeurs : 2 Ordre d'amorçage : Disque dur, Optique, Disquette Accélération : Pagination imbriquée, Paravirtualisation Hyper-V
 Affichage
Mémoire vidéo : 128 Mo Contrôleur graphique : VBoxSVGA Serveur de bureau à distance : Désactivé Enregistrement : Désactivé
 Stockage
Contrôleur : SATA Port SATA 0 : Windowsserverleofosseux.vdi (Normal, 80,00 Gio) Port SATA 1 : [Lecteur optique] fr-fr_windows_server_2025_x64_dvd_bd6be507.iso (5,61 Gio) Contrôleur : Floppy Floppy Device 0 : Unattended-1abf8bdf-650e-452f-a552-c93875d9e060-aux-floppy.img (1,41 MB)
 Audio
Pilote hôte : Par défaut Contrôleur : Intel Audio HD
 Réseau
Interface 1: Intel PRO/1000 MT Desktop (NAT)
 USB
Contrôleur USB : xHCI Filtres de périphérique : 0 (0 actif)
 Dossiers partagés
Aucun
 Description
Aucune

Installation de Windows Server 2025 !

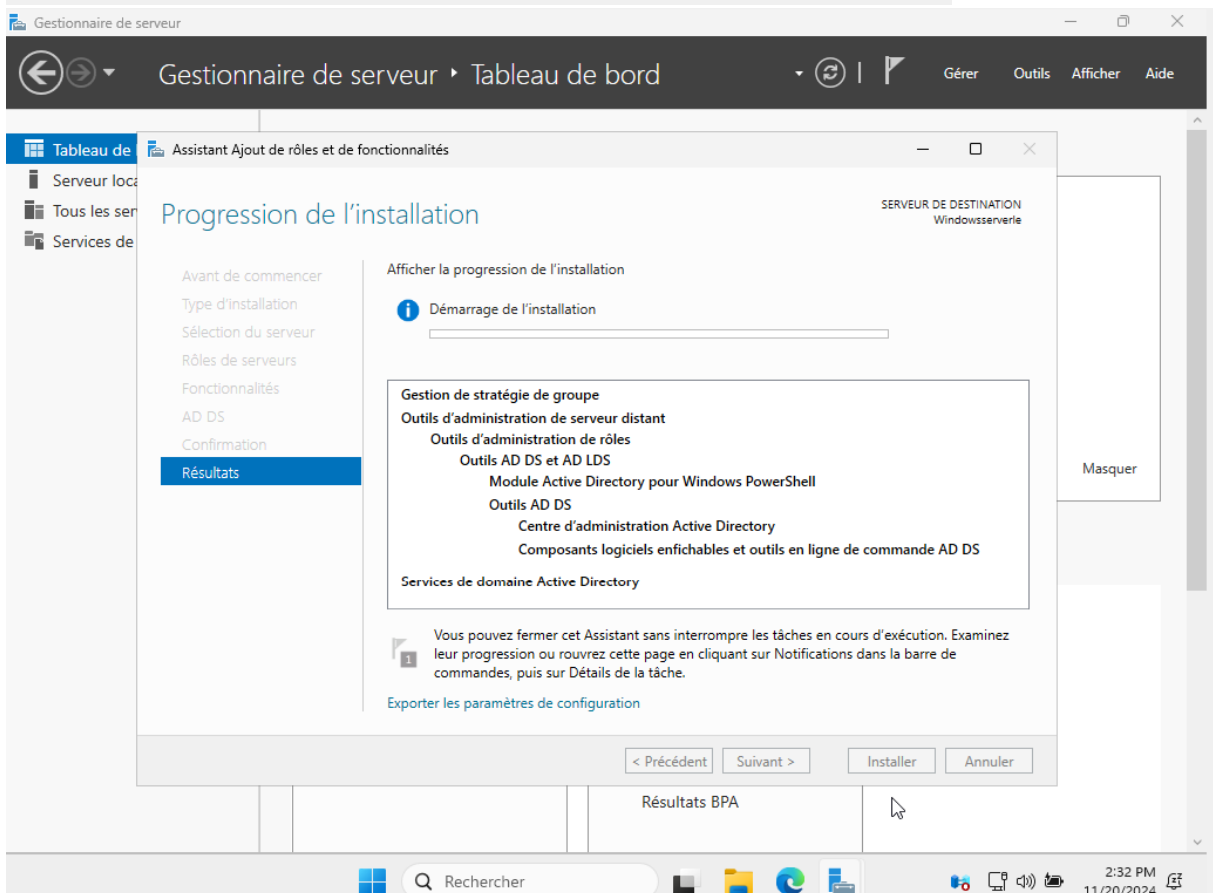
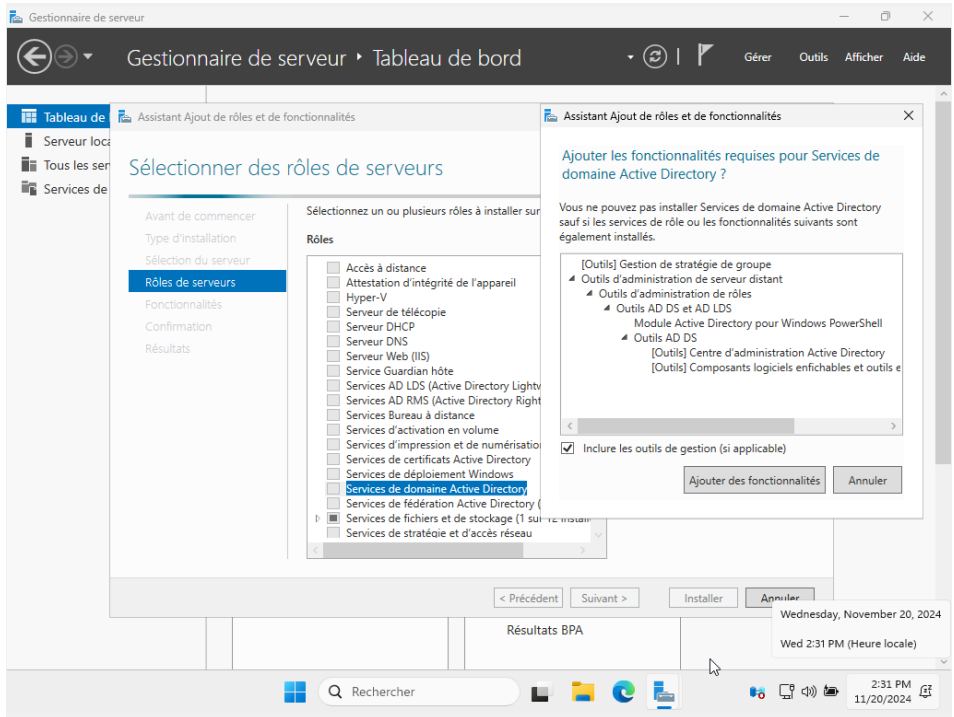


Démarrage de windows serveur 2025 !

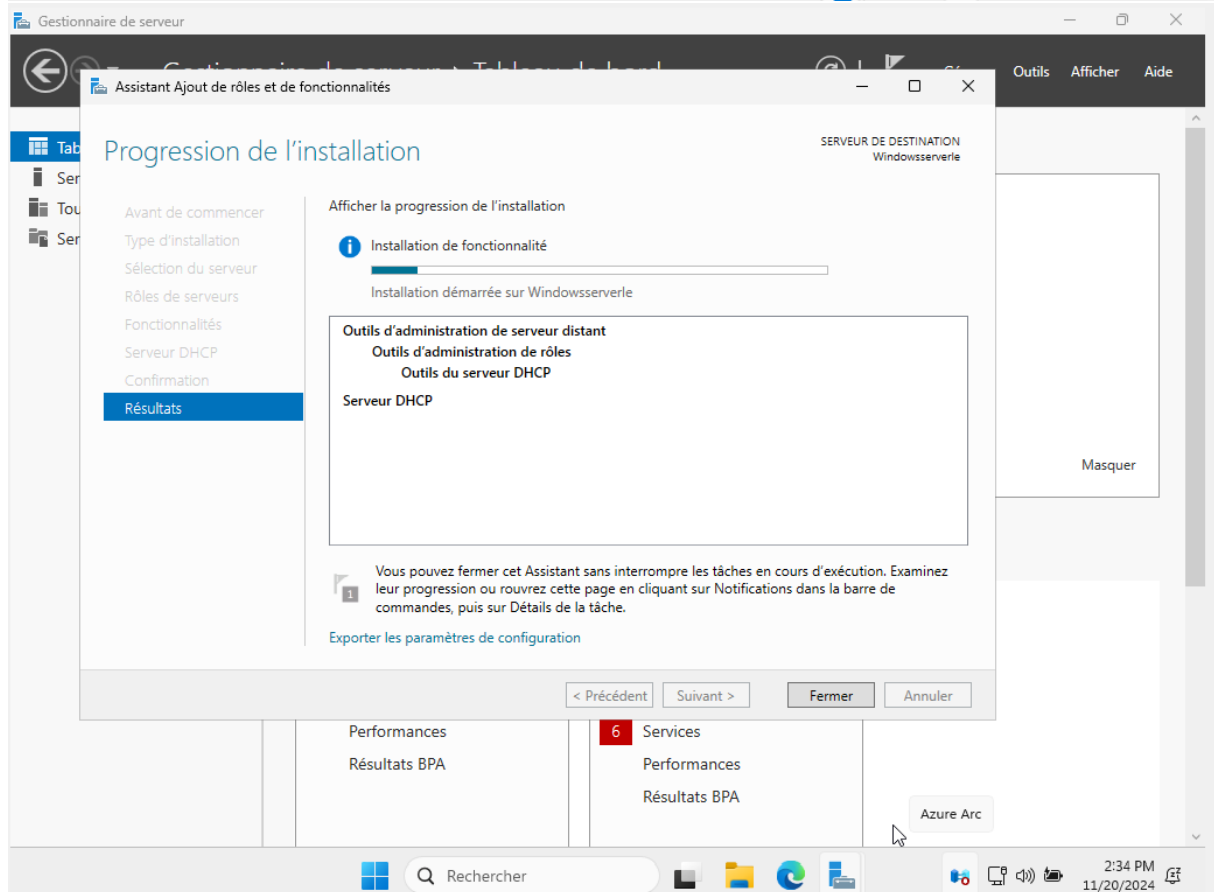
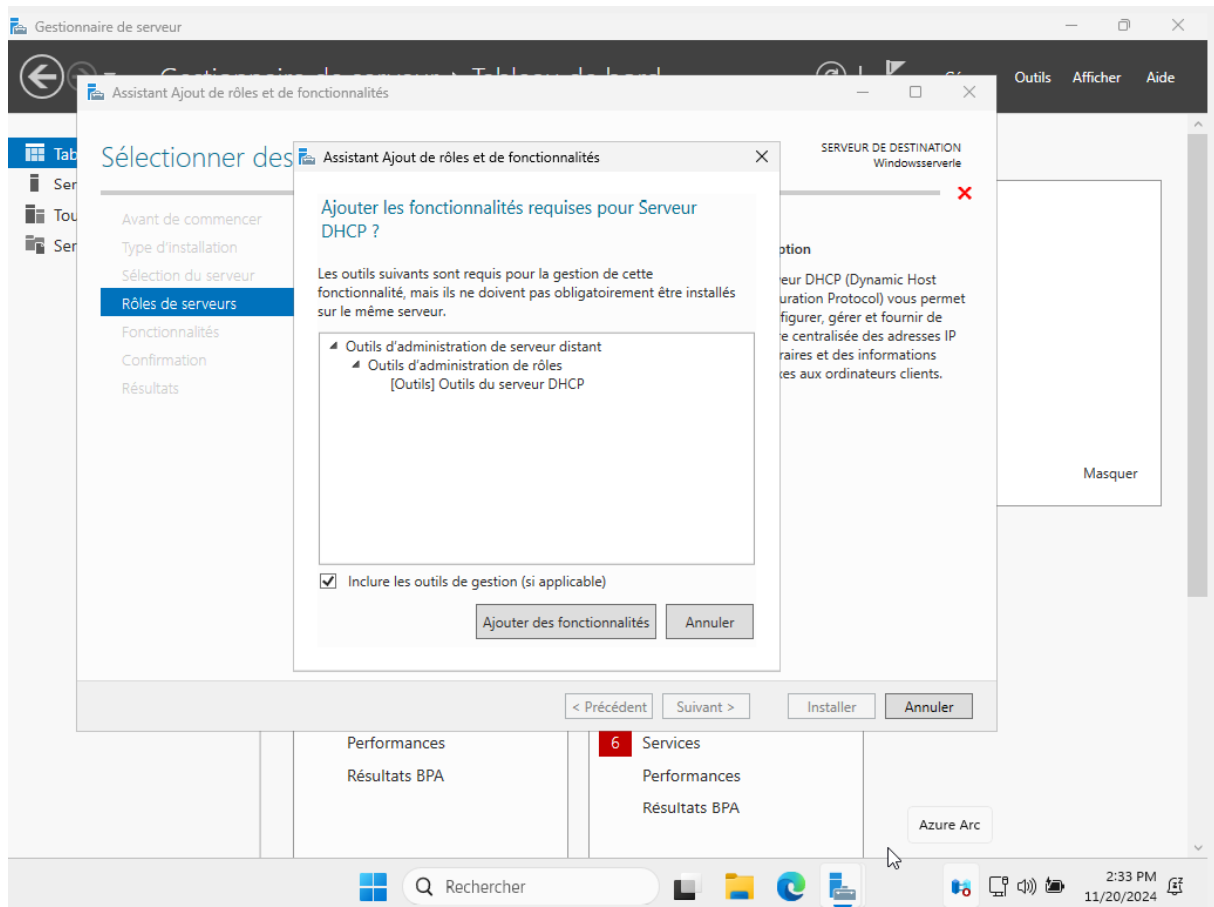


Configuration des services :

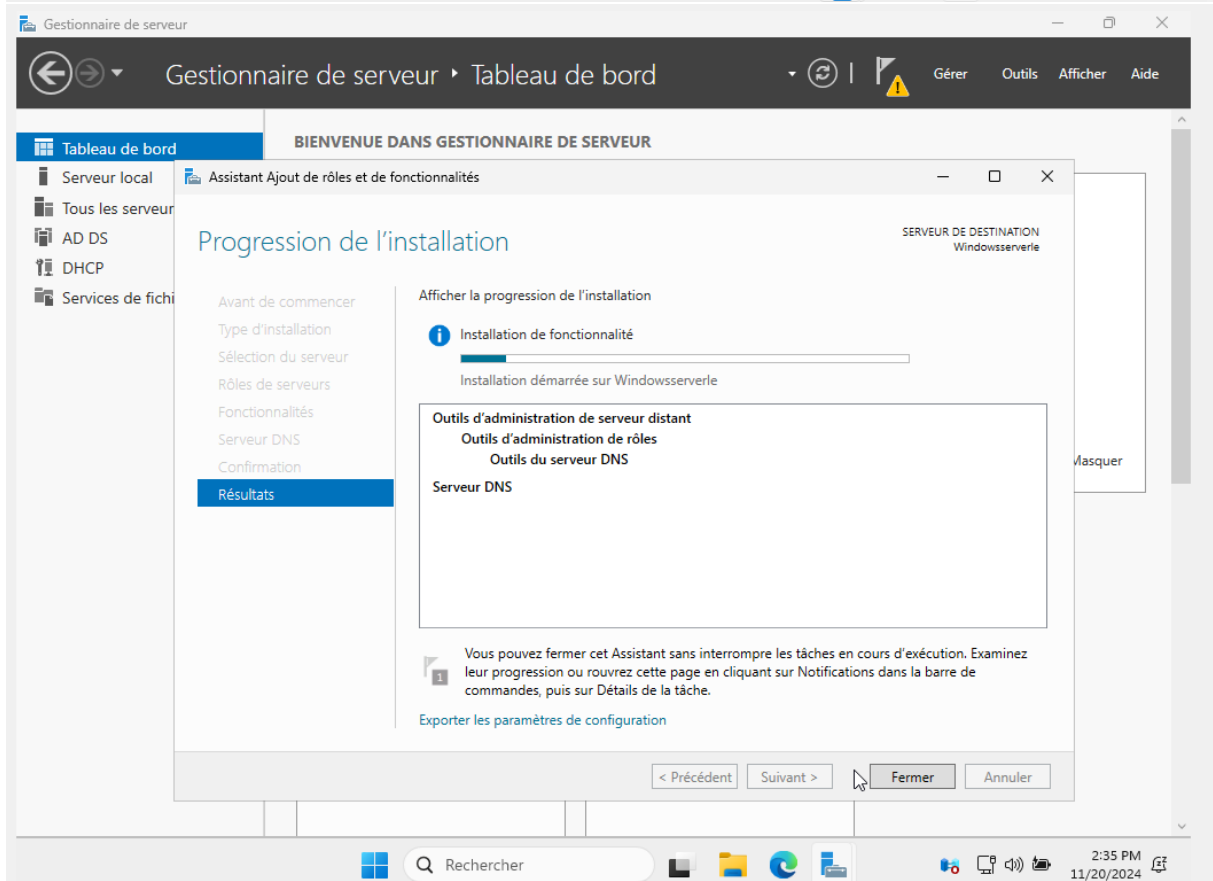
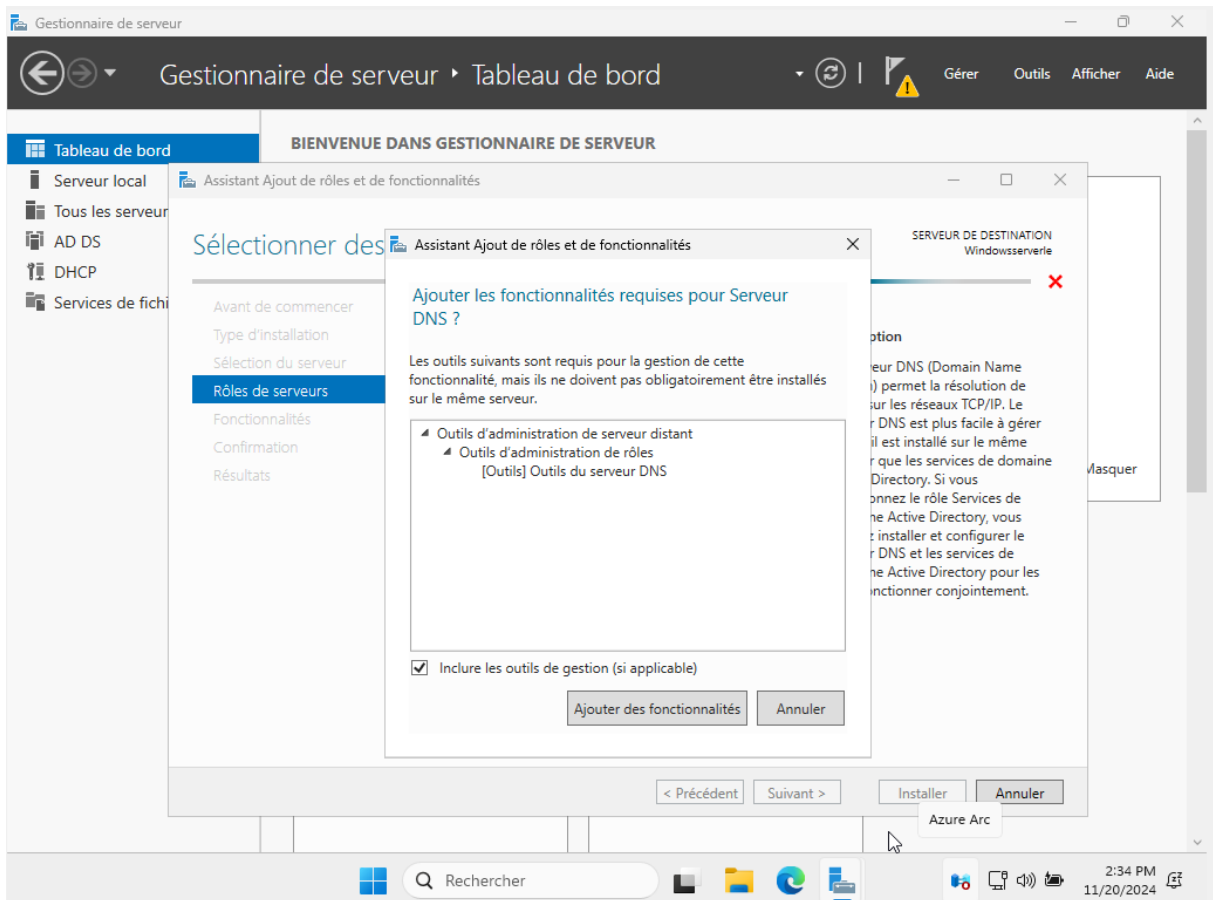
Active directory !



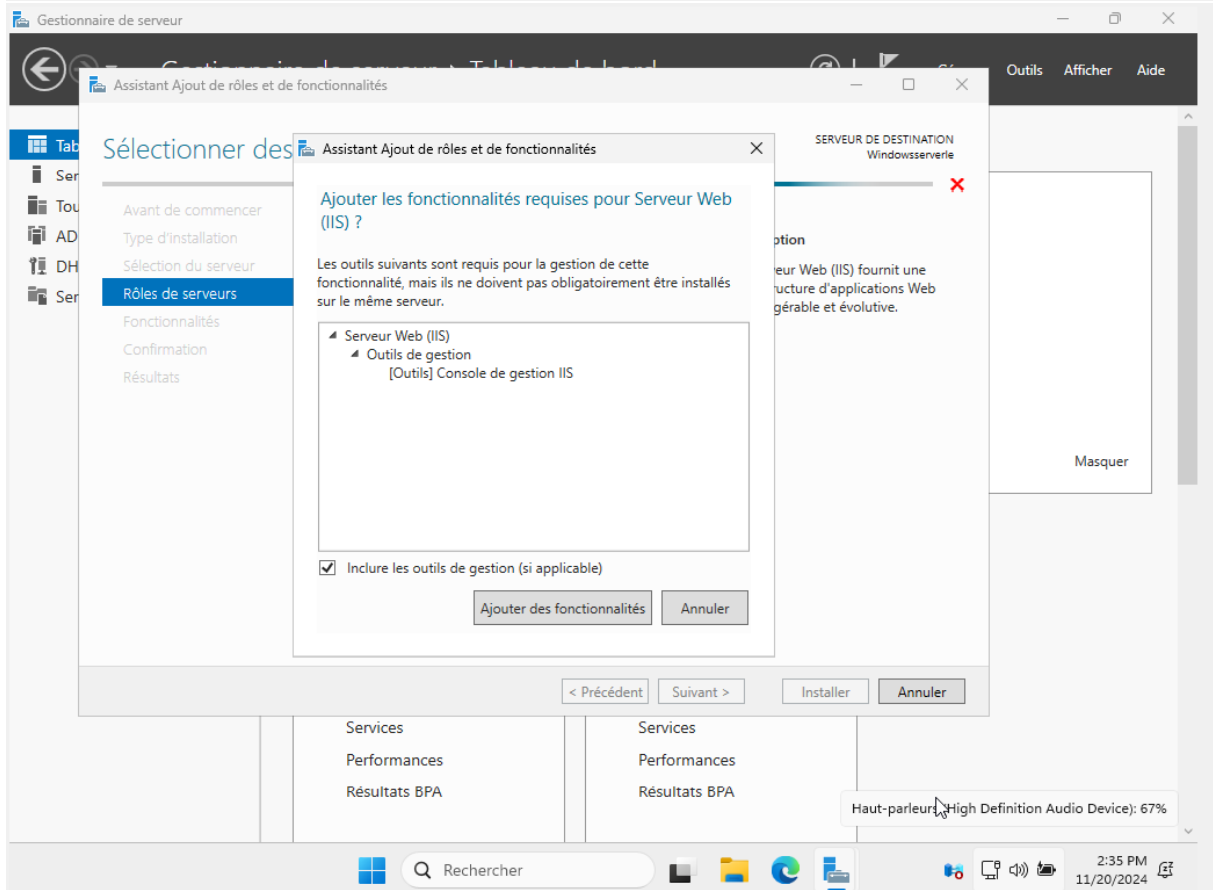
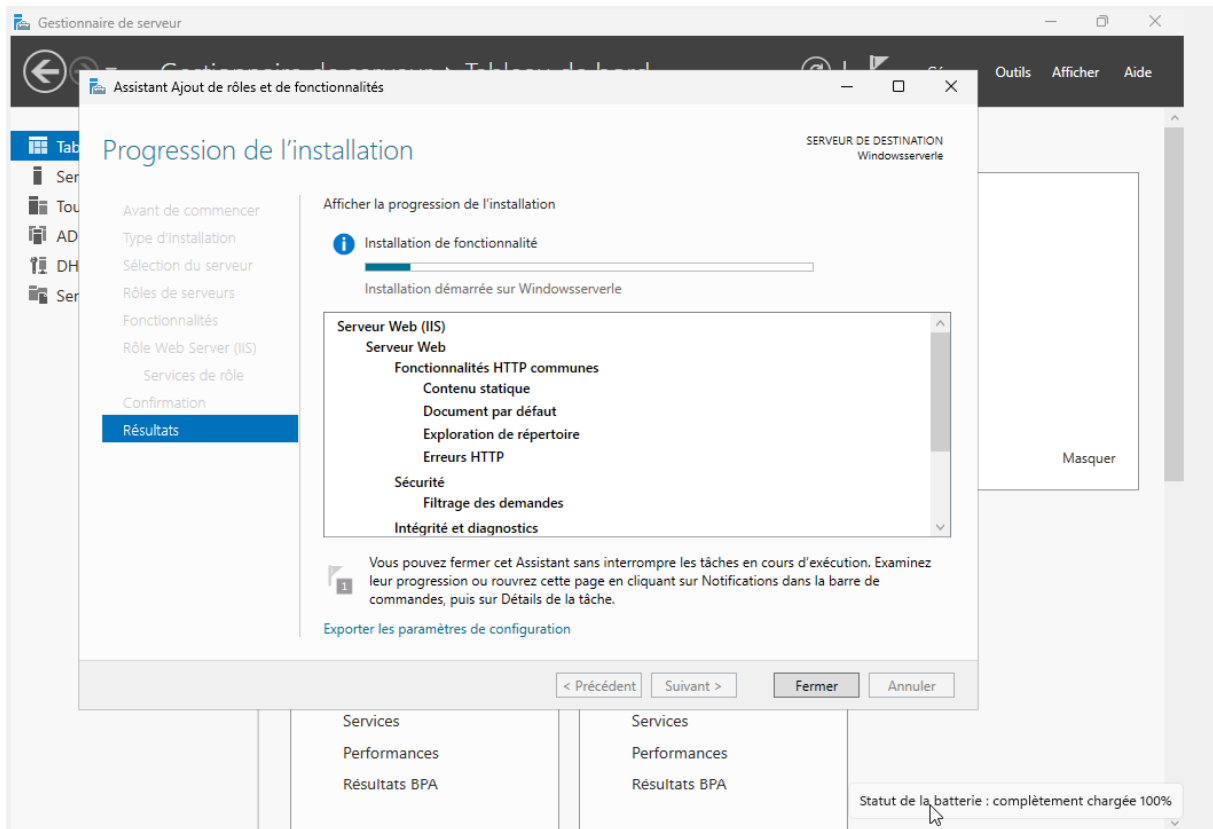
Le DHCP !



Le DNS ! :



Serveur Web IIS ! :



FIN DU TP

Léo Fosseux !